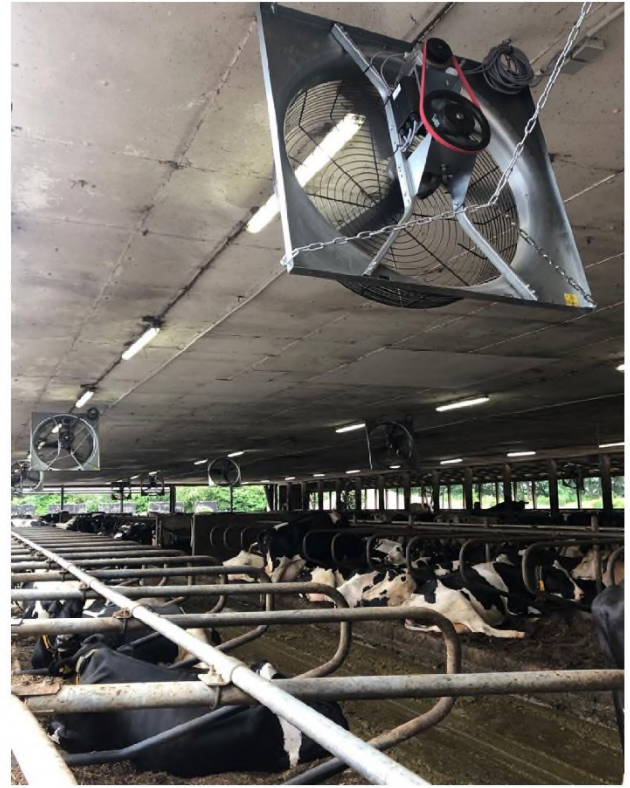


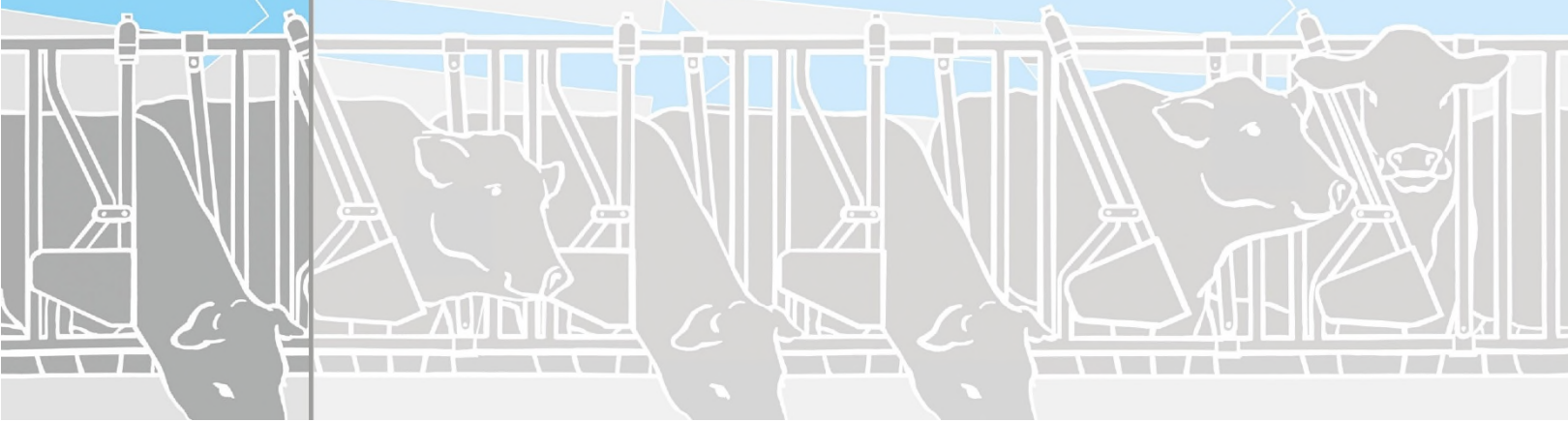


**Energy savings in the barn !**

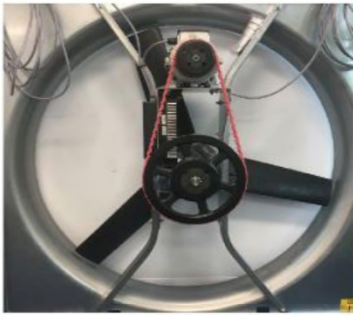


*Dairy cattle ventilation systems*

***The Abbi-Apex 36 ventilator has extremely low power consumption and is easy to regulate. Suitable for low barns.***







EC-permanent magnetic motor with an inverter and fan belt (Aerolink)

### Expansion of a successful ventilation concept

The successful energy efficient ABBIFAN 140-XXP 140 cm fan now has a smaller variant: **Abbi-Apex 36**.

The Abbi-Apex 36 fan has been specially developed for **low barns**. Measuring 109 cm, the fan is smaller than the existing versions and with its corresponding air output can be used in low barns.

With the addition of the Abbi-Apex 36, we have a complete range of energy efficient fans to meet the ventilation needs of every dairy farm.

### Placement in low barns

The fans can be used for longitudinal ventilation, as well as for improved cross ventilation.

**Cross ventilation** provides for fresh outside air in the barn, which significantly improves the barn climate. Furthermore, the cubicles are ventilated longitudinally, which increases the cooling effect for the dairy cattle.

The best result is obtained with an open sidewall height of 3.80 m.

### Version

Delivered standard with suspension hooks and a galvanised inlet rim. The fan must be installed at the right angle (approx. 21°) using braces with chain or steel wire. This ensures that an effective air speed is delivered to the animals.

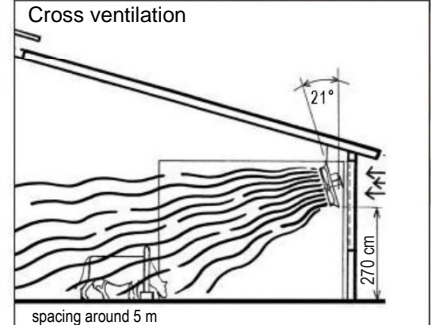
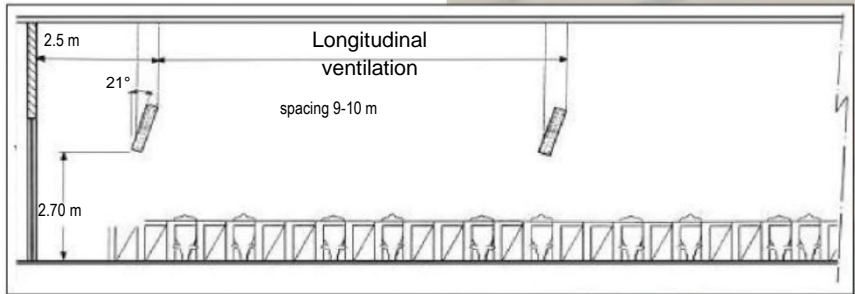
The Abbi-Apex 36 has 3 propeller blades of sustainable material.

### Regulating capacity with the DCC-Touch controller

The user-friendly DCC-Touch fan controller makes it possible to accurately set the desired temperature.

The fan's speed is automatically controlled by a 0-10V signal based on the pre-set temperature. That means temperature fluctuations are a thing of the past!

The DCC-Touch is capable of operating multiple fans.



Model with protective grille

| Type                     | Abbi-Apex 36   | Throw length and width |                 |                   |
|--------------------------|----------------|------------------------|-----------------|-------------------|
| <b>Abbi-Apex 36 XG-1</b> |                | Throw length metre     | Air speed m/sec | Throw width metre |
| Voltage                  | 230 V, 1-phase | 3 m                    | 4.8             | 1.5               |
| Frequency                | 50/60Hz        | 6 m                    | 3.2             | 3                 |
| Power consumption        | 1.4A (max)     | 9 m                    | 2.6             | 6                 |
| Electronic inverter      | 0-10V          | 12 m                   | 2.1             | 6                 |
| Power (max)              | 328W/h         | 15 m                   | 1.7             | 6                 |
| Energy efficiency label  | A              |                        |                 |                   |

### Misting

When temperatures are higher, extra cooling can be achieved by installing the misting system. Using special brackets, the sprinklers can easily be mounted on the fan for optimal operation.



### Other product information:

Weight 32.5 kg  
 Dimensions 109x109 cm  
 Box dimensions 112x112x40 cm

*New studies show that the increase in milk production also increases stress sensitivity and that this can start at temperatures as low as 22 °C.*

*The THI Index is a good indicator of heat stress. At a value below 68, no effects can be observed on a cow's milk production, health and reproduction.*

